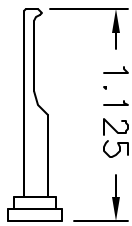


**UNCONTROLLED DOCUMENT
WILL NOT BE UPDATED**

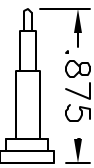
REV. SYM.		E.C.O. NUMBER	DESCRIPTION	BY DATE	APP'D DATE
1			ORIGINAL RELEASE	RSS 10/93	DE 10/93

AMPHENOL P/N REF:



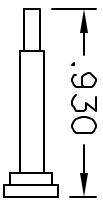
(356-400-11)

DHK165-2



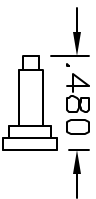
(356-400-12 & 12T)

DHK165-2A



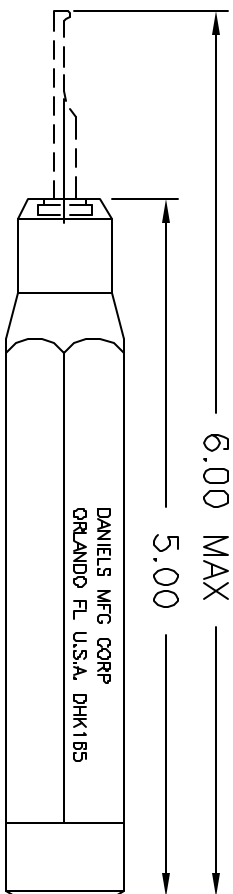
(356-400-13 & 13T)

DHK165-2B

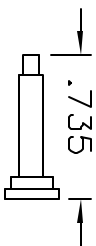


(356-400-14)

DHK165-2C

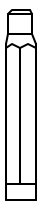


AMPHENOL P/N REF:



(356-400-15)

DHK165-2D



(256-200)

(HANDLE) (DOES NOT INCLUDE TIPS)

RESTRICTED & CONFIDENTIAL

CONFIDENTIAL PROPERTY OF DANIELS MANUFACTURING CORP. NOT TO BE DISCLOSED TO OTHERS, REPRODUCED OR USED FOR ANY OTHER PURPOSE, EXCEPT AS AUTHORIZED IN WRITING BY DANIELS MANUFACTURING. MUST BE RETURNED TO DANIELS MANUFACTURING CORP. ON COMPLETION OF ORDER OR OTHER PURPOSE FOR WHICH LENT.

MATERIAL

HEAT TREAT

FINISH

ITEM

PART NO.

QTY.

DESCRIPTION/REMARKS

DRN. RSS

DATE 10/93



DANIELS MANUFACTURING CORP.
ORLANDO, FLORIDA
CAGE 11851

CHK'D. DATE

APP'D. DE DATE 10/93

TITLE
INSTALLING & REMOVAL TOOL
ENVELOPE DRAWING

WHERE USED:

SIZE SCALE CAD P/N SHEET OF
A NTS DHK165-ENV 1 1

DO NOT SCALE DRAWING

POSTING P/N REV.
DHK165-ENV 1

UNLESS OTHERWISE SPECIFIED FRACTIONS±1/32 ANGLES±1/2°
X:±.020 XX:±.010
.XXX:±.005 .XXXX:±.0005
REMOVE BURRS & BREAK SHARP EDGES .005-.015