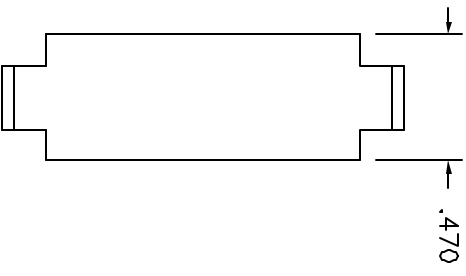
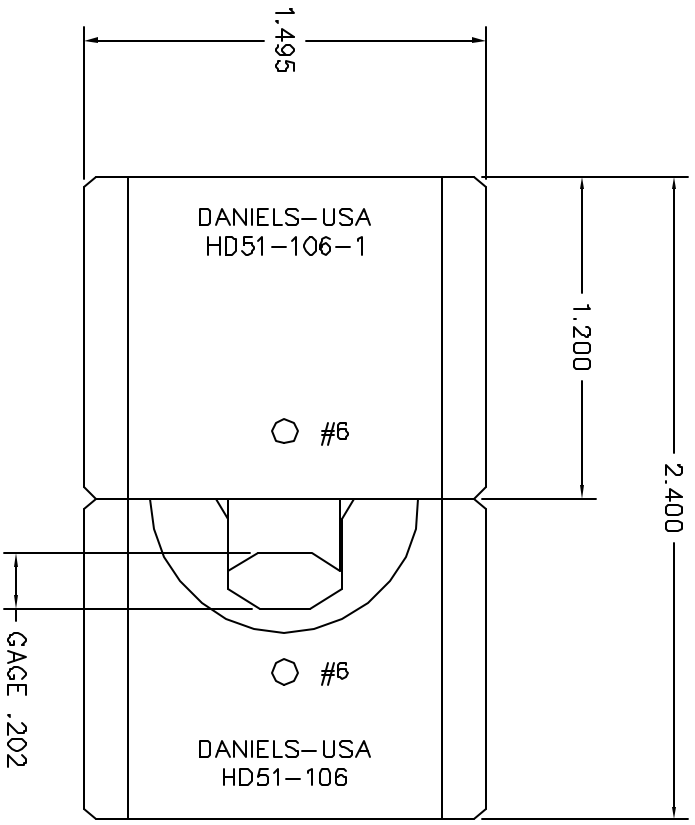


REVISIONS				
REV. NUMBER	E.C.D. NUMBER	DESCRIPTION	BY DATE	APP'D DATE
1		ORIGINAL RELEASE	DVS 8/12/84	DE 8/84
2		REVISED PICTORALLY	JMU 6/22/89	RHR 6/22/89
3		REVISED MARKINGS ON STATIONARY DIE	JMU 12/20/99	RHR 12/20/99



**UNCONTROLLED DOCUMENT
WILL NOT BE UPDATED**

1. USED FOR SIZE #6 AWG INSULATED TERMINALS.

NOTES:

RESTRICTED & CONFIDENTIAL		CONFIDENTIAL PROPERTY OF DANIELS MANUFACTURING CORP. NOT TO BE DISCLOSED TO OTHERS, REPRODUCED OR USED FOR ANY OTHER PURPOSES EXCEPT AS AUTHORIZED BY DANIELS MANUFACTURING CORP. ON COMPLETION OF ORDER OR OTHER PURPOSE FOR WHICH UNIT.	
MATERIAL		FINISH	
HEAT TREAT		DO NOT SCALE DRAWING	
ITEM	PART NO.	QTY.	DESCRIPTION/REMARKS
DRAWN: D. CAO	DATE: 5-22-81		Daniel's Manufacturing Corp. ORLANDO, FLORIDA GAGE 11851 DIE SET ENVELOPE DRAWING
CHECKED: DE	DATE: 9-95		
APPROVED:	DATE:		
WHERE USED:		SIZE	SCALE
		B	2X
		POSTING	CHD P/N
			HD51-106-ENV
			SHEET 1 OF 1
			REV. 3