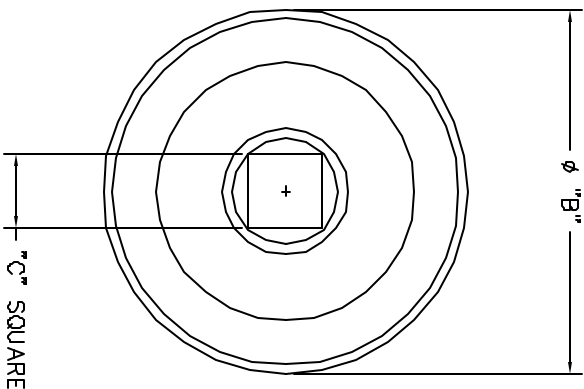
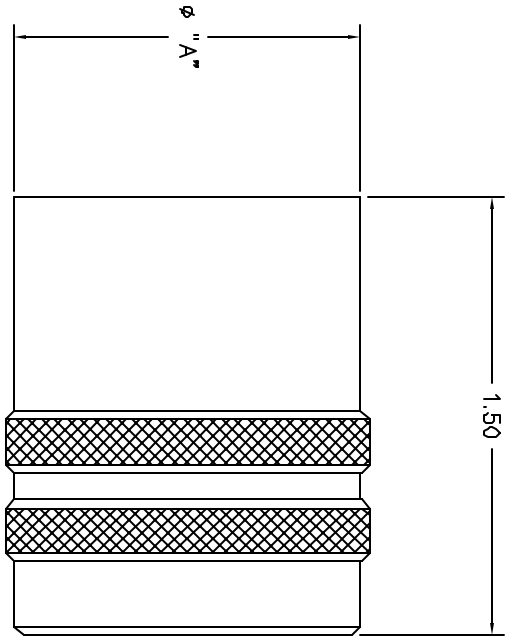


REVISIONS			
REV. NO.	DATE	BY	ASBY
1	1/29/00		1/29/00

REV. NO.	DESCRIPTION	DATE	BY
1	ORIGINAL RELEASE	1/29/00	1/29/00



PART NO.	DIM. "A"	DIM. "B"	DIM. "C"	KEYING POSITIONS
CM389LR-25	1.812	1.875	3/8	ALL
CM389LR-23	1.690	1.750	3/8	ALL
CM389LR-21	1.565	1.625	3/8	ALL
CM389LR-19	1.440	1.500	3/8	ALL
CM389LR-17	1.315	1.375	1/4	ALL
CM389LR-15	1.190	1.250	1/4	ALL
CM389LR-13	1.065	1.125	1/4	ALL
CM389LR-11	.940	1.000	1/4	ALL
CM389LR-9	.768	.812	1/4	ALL

**UNCONTROLLED DOCUMENT
WILL NOT BE UPDATED**

<p>RESTRICTED & CONFIDENTIAL</p> <p>MANUFACTURING EXPERIMENTAL DRAWING NOT TO BE USED FOR ANY OTHER PURPOSE EXCEPT AS AUTHORIZED IN WRITING BY DANIELS MANUFACTURING. MUST BE RETURNED TO DANIELS MANUFACTURING OFFICE ON COMPLETION OF ORDER WHICH IDENT.</p>		MATERIAL		FINISH	
		HEAT TREAT		FINISH	
ITEM	PART NO.	QTY.	DESCRIPTION/REMARKS	DATE	BY
DRN. J. JOYCE			DANIELS MANUFACTURING CORP. ORLANDO, FLORIDA CASE 11851	1/19/00	
APPRO. RRR	DATE				
APPRO. DATE					
NOTE:			WHERE USED:		
THIS DRAWING IS AN OUTLINE DRAWING OF THE REQUESTIVE DRAWING PART NUMBER INDICATED ABOVE. DIM. NUMBERS WITHIN THE "ENV" SURFIX.			MIL-C-38999 SERIES 1 ENVELOPE DRAWING		
DO NOT SCALE DRAWING			SHEET OF 1		
			REV 1		