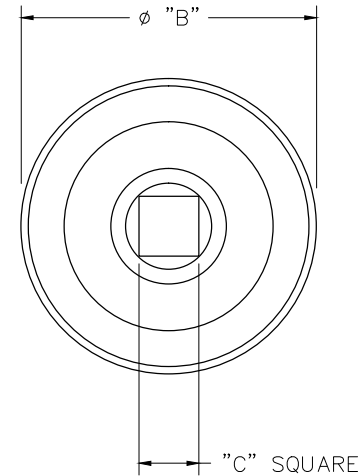
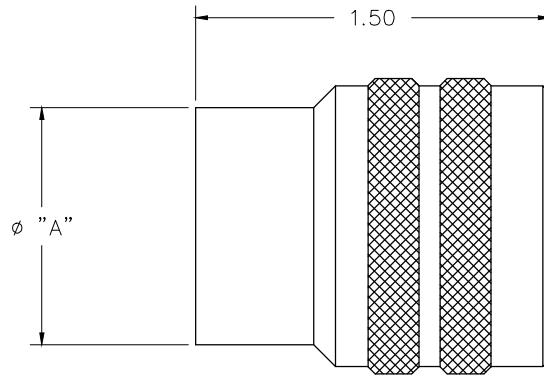



REVISIONS				
REV. SYM.	E.C.O. NUMBER	DESCRIPTION	BY DATE	APP'D DATE
2		KEY POSITIONS CHANGED	TD 6/22/09	



CM288R-33B	1.792	2.125	3/8	2,3,4,5,6
CM288R-33A	1.792	2.125	3/8	1
CM288R-29B	1.589	1.938	3/8	2,3,4,5,6
CM288R-29A	1.589	1.938	3/8	1
CM288R-25B	1.434	1.750	3/8	2,3,4,5,6
CM288R-25A	1.434	1.750	3/8	1
CM288R-23B	1.273	1.625	3/8	2,3,4,5,6
CM288R-23A	1.273	1.625	3/8	1
CM288R-19B	1.088	1.375	3/8	2,3,4,5,6
CM288R-19A	1.088	1.375	3/8	1
CM288R-17B	.920	1.250	1/4	2,3,4,5,6
CM288R-17A	.920	1.250	1/4	1
CM288R-15B	.850	1.125	1/4	2,3,4,5,6
CM288R-15A	.850	1.125	1/4	1
CM288R-13B	.679	1.000	1/4	2,3,4,5,6
CM288R-13A	.679	1.000	1/4	1
CM288R-11B	.555	.875	1/4	2,3,4,5,6
CM288R-11A	.555	.875	1/4	1
PART NO.	DIM. "A"	DIM. "B"	DIM. "C"	KEYING POSITIONS

**UNCONTROLLED DOCUMENT
WILL NOT BE UPDATED**

DIMENSIONS IN INCHES - UNLESS OTHERWISE SPECIFIED

RESTRICTED & CONFIDENTIAL CONFIDENTIAL PROPERTY OF DANIELS MANUFACTURING CORP. NOT TO BE DISCLOSED TO OTHERS, REPRODUCED OR USED FOR ANY OTHER PURPOSE, EXCEPT AS AUTHORIZED IN WRITING BY DANIELS MANUFACTURING. MUST BE RETURNED TO DANIELS MANUFACTURING CORP. ON COMPLETION OF ORDER OR OTHER PURPOSE FOR WHICH LENT.	MATERIAL	ITEM	PART NO.	QTY.	DESCRIPTION/REMARKS			
	HEAT TREAT	DRY. <i>Tony Dilworth</i>	DATE 1/4/08		 DANIELS MANUFACTURING CORP. ORLANDO, FLORIDA CAGE 11851			
		CHK'D.	DATE					
	FINISH	APP'D.	DATE		TITLE	METAL ADAPTOR TOOL		
APP'D.		DATE			MIL-C-28840 RECEPTACLES ENVELOPE DRAWING			
DO NOT SCALE DRAWING		NOTE:		WHERE USED:				
		THIS DRAWING IS AN OUTLINE DRAWING OF THE RESPECTIVE DMC PART NUMBER INDICATED. ACTUAL DMC PART NUMBER IS DRAWING NUMBER WITHOUT THE "-ENV" SUFFIX.		SIZE	SCALE	CAD P/N	SHEET	OF
		B	2X	CM-S-288R-ENV	1	1		
		POSTING	DWG. NO.	REV.				
			CM-S-288R-ENV	2				