

## Dies, Hand Tools and Hydraulic Heads Configuration Options

Insulation Piercing Crimp COPALUM Terminals and Splices



Wire Size in AWG [mm²]		DYNA-CRIMP System 8,200 psi Operating Pressure	
		Hydraulic Heads (Shank Die)	
Al	Cu	69099	69082
8 [7-8.5]	10 [5-6]	68084	
6 [13-15]	8 [7-8.5]	68085	
4 [21]	6 [13-15]	68086	
2 [34-35]	4 [21]	68130	
1/0 [50-60]	2 [34-35]	68131	
2/0 [67-70]	1/0 [50-60]	68132	
3/0 [80-95]	2/0 [67-70]	68133	
4/0 [100-125]	3/0 [80-95]	318106-1	68129

## Hydraulic Equipment Options for 56,540 kPa / 8,200 psi

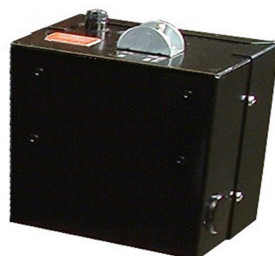
Hydraulic Hand Pump, manual

PN **314979-1**



3-Way Multidirectional Valve

PN **59920** (manual)



## Selecting a Hydraulic System?

Have you remembered a ...

- Pump
- Hand or foot control
- Hose
- Crimp head
- Crimp die

# Hydraulic Tooling Selection Guide - 70,000 kPa / 10,000 psi

## Pump and Hose Options

The heavy-duty pump is designed for continuous use.

### Heavy duty electric hydraulic pump



110 V<sup>1,2</sup> PN 1804700-1  
220 V<sup>1,2</sup> PN 1804700-2

### Hydraulic hoses<sup>3</sup>



PN 1583662-1 – 1.8 m / 6 ft  
PN 1583662-2 – 3.0 m / 10 ft  
PN 1583662-3 – 6.1 m / 20 ft

WITH

## Heavy-Duty Crimp Heads (Shank Dies)( > 25,000 cycles)



8 - 4/0 A  
22 t output force 16 lbs  
PN 1752877-1  
IS 408-8956



4/0 AWG-1000 MCM  
26 t output force 29 lbs  
PN 1752786-1  
IS 408-8958



8 - 4/0 AWG  
33 t output force 28 lbs  
PN 1752787-1  
IS 408-8914



12-10 AWG - 350 MCM  
18 t output force 13 lbs  
PN 1752868-1  
IS 408-8959



AMPOWER	6 AWG-1500 MCM
AMPOWER quick disconnect	1/0 AWG-600 MCM
Insulation piercing COPALUM	10 AWG (Cu)-3/0 AWG
Sealed COPALUM	10 AWG-3/0 AWG
Bar COPALUM	10 AWG (Cu)-400 MCM
SOLISTRAND	8 AWG-600 MCM
STRATO-THERM	8 AWG-2/0 AWG
TERMINYL	1/0 AWG thru 4/0 AWG

## Medium-Duty Crimp Heads & Hand Tools (U-Dies)



14 t output force  
1.5" stroke;  
crimp head

U-die compatible  
PN 1490746-1  
IS 408-10112



12 t output force  
1" stroke crimp head

U-die compatible  
PN 1490745-1  
PN 1490747-1 (titanium)  
IS 408-8715



14 t output force  
1.5" stroke heavy-duty  
crimp head

U-die compatible  
PN 1976230-1  
IS 408-10145



14 t output force 1.5"  
stroke  
crimp tool

U-die compatible  
PN 1490749-1  
IS 408-8717



1" stroke hand  
crimp tool

U-die compatible  
PN 1490748-1  
IS 408-8716



AMPOWER	6 AWG - 4/0 AWG
SOLISTRAND	8 AWG - 4/0 AWG
TERMINYL	8 AWG - 1/0 AWG

## SOLISTRAND (Integrated Crimp Dies)



#8-#2 AWG SOLISTRAND crimp head  
(no crimp dies required)  
PN 1673672-1 / IS 408-8910



#8-#2 AWG SOLISTRAND crimp tool  
(no crimp dies required)  
PN 59975-1 / IS 408-6758

- <sup>1</sup> Foot pump 523199-2 OR Hand pump 1583661-1 can be substituted as manual options for electro-hydraulic pumps
- <sup>2</sup> Includes male screw-to-connect, <sup>3</sup>/<sub>8</sub>" NPT quick couplers
- <sup>3</sup> Includes female screw-to-connect, <sup>3</sup>/<sub>8</sub>" NPT quick couplers

## Hydraulic Equipment Options and More Detailed Information for 70,000 kPa / 10,000 psi



### Battery-Hydraulic Tool Kit 12 t U-Die

110 V PN 2280308-1  
220 V PN 2280308-2

- Complete kit with battery charger
- Suitable for all 'U' dies with the exception of U-die assembly (14 t)
- Rotating head 320°
- Excellent power to weight ratio

Kit includes:

- Crimp tool
- Battery charger 110 V PN 217331-1  
Battery charger 220 V PN 2217331-2
- Rechargeable battery PN 2280309-1
- Carry case with strap



### Electric Hydraulic Pumps, Heavy Duty

110 V PN 1804700-1  
220 V PN 1804700-2

suitable for continuous use

- Two speed cycle reduces cycle time for improved productivity
- Pump shuts down after pressure-switch setting is reached
- Easy to read integrated oil level sight glass
- Totally enclosed fan-cooled motor - ideal for use in any environment
- Quiet operation 70-79 dB(A)
- Swivel wheels provide easy manoeuvrability



### Hydraulic Hand Pump, Manual

PN 1583661-1

**This pump action unit allows hydraulic heads via optional length hydraulic hoses a degree of positional flexibility.**



### Hydraulic Foot Pump, Manual

PN 523199-2

- Pump action operation
- Clicker valve pressure regulation
- Supplied with male quick-coupling

### 3-Way Multidirectional Valve

PN 1901782-1 (manual)

