



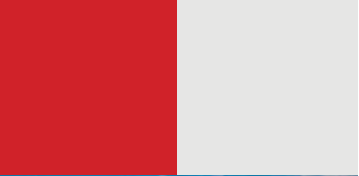
# AMDP

MADE FOR INDUSTRY

ASSEMBLY TOOLS



**MES** **Statistics** **Assembly** **Preventive maintenance**  
**Lean** **International** **Process control** **Kitting**  
**Manufacturing** **Testing** **Operator support**  
**Reporting** **Expert** **management** **FOD**  
**Traceability** **Tooling** **Park**  
**Efficiency** **Quality** **SMART**  
**Performance** **FACTORY** **4.0**  
**Assembly** **Passionate** **INDUSTRY 4.0**



## ABOUT US...

AMDP, your industrial equipment provider, offers a comprehensive range to meet customers' specific needs in terms of hand tools, metrology solutions, servo screwdrivers, pneumatic and aviation tools as well as connected solutions for traceability and production monitoring.

We are the official supplier of SNAP-ON tools for over forty years now, we also work in partnership with many other brands such as NORBAR, INGERSOLL RAND, FELO, MITUTOYO, MOMENTO, BIAx, ATI, APEX and many more...



# TABLE OF CONTENTS

4	SNAP-ON HAND TOOLS
6	MULTI-BRANDS HAND TOOLS
8	SPECIAL TOOLS
10	AVIATION TOOLS
12	METROLOGY SOLUTIONS
14	PNEUMATIC TOOLS
16	MATERIAL REMOVAL
18	BATTERY-POWERED TOOLS
19	SCREWDRIVER ACCESSORIES
20	SERVO SCREWDRIVER
22	WORKSHOP SOFTWARE
24	HANDLING AND ERGONOMICS
25	WORKSHOP FURNITURE
26	SMART STORAGE SOLUTIONS
28	LIGHTING
29	OUR OTHER SERVICES
30	OUR MAIN BRANDS
31	ALSO DISCOVER IN OUR GROUP...

# SNAP-ON HAND TOOLS

## Partners and official distribution of SNAP-ON since 1985!

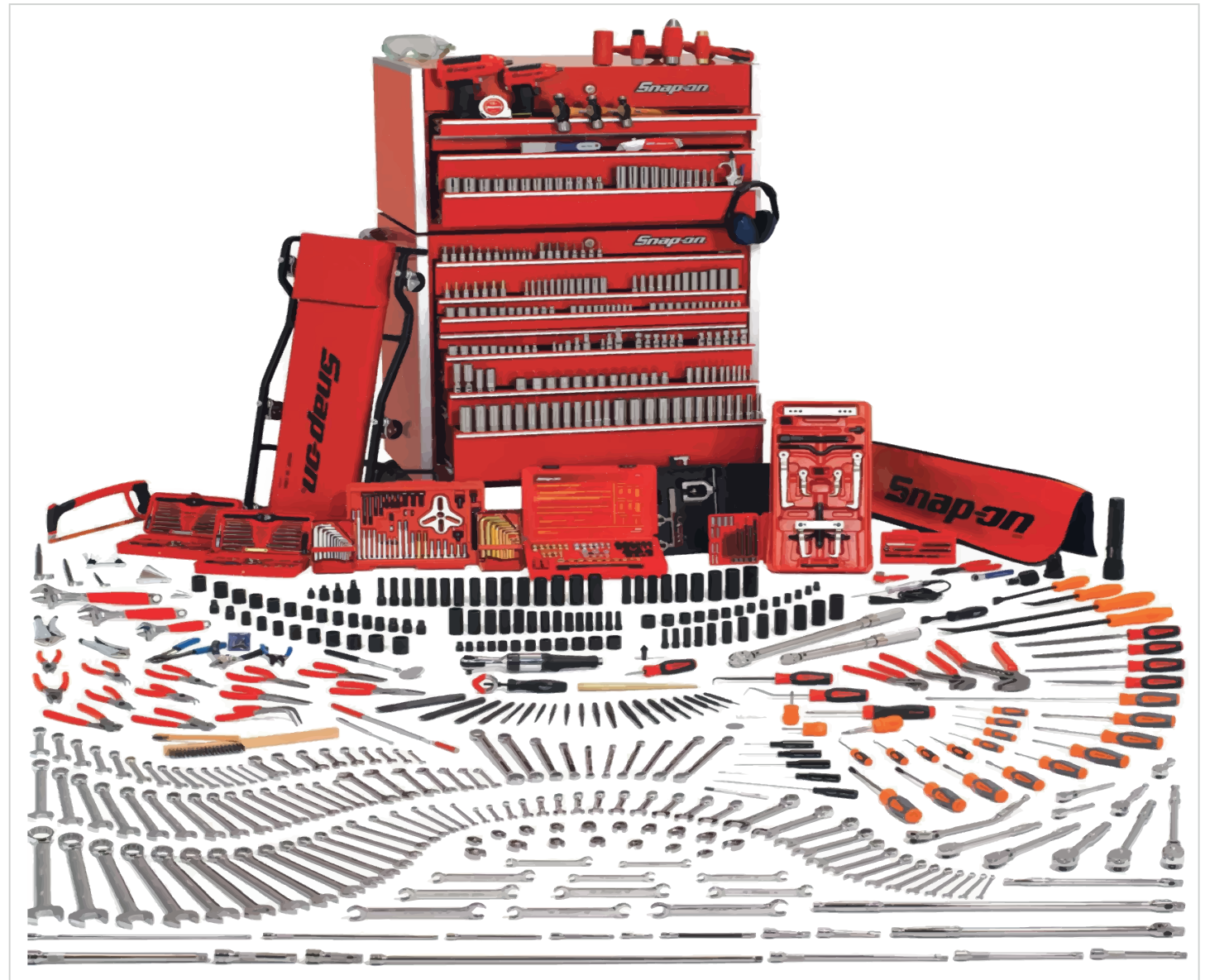
AMDP and SNAP-ON a collaboration of more than 40 years at the service of the industry!

Since the beginning, AMDP has been distributing SNAP-ON tools and equipment in France and providing after-sales service.

This partnership has been strengthened over the years, so our company has become an expert on all SNAP-ON product lines.

The American firm trusts us to offer French manufacturers the best in hand tools as well as connected storage solutions.

**Snap-on**



## CHROME-PLATED SOCKETS

For hand tool



## BLACK - OXIDISED SOCKETS

Tooling for rotating machines

## RATCHET WRENCHES

US and metric dimensions available



## CUSHION THROAT PLIERS

Pliers to prevent cut cable sections from falling



## RATCHETS

Riveted anti-FOD ratchet



## INSULATED TOOLS

Range of non-conductive composite tools



## CONNECTORS PLIERS

Pliers for clamping connectors



## WRENCHES

Metric and inch

# MULTI-BRAND HAND TOOLS

AMDP also distributes many other brands of hand tools, depending on your needs and budget



## SET OF TOOLS

Set with ratchet and bits



## HAMMERS



## CROWFOOTS



## MALE WRENCH SETS



## PLIERS, SCREWDRIVERS, WRENCHES

All types of multi-brand hand tools are available

# SPECIAL TOOLS

## Tools adapted to your requirements and needs

AMDP develops specific tools to meet your technical and geometrical requirements. Our design office, equipped with CATIA V5, SOLIDWORKS® and XAO ELEC®, can present and define the specific tool that will perfectly meet your needs. From 3D prototyping to machining, heat treatment and surface treatment phases, AMDP will support and guide you in defining and using your customised tools.







## OFFSET RATCHET WRENCHES

In addition to offset crowfoot wrenches, our special spanners can be fitted with ratchet systems to save operators time and improve ergonomics during torque tightening. These wrenches are customised according to your working environment.



## RING WRENCHES

Can't find the wrench you want in the catalogue ? AMDP will develop the right tool for you: hexagon, 12-point, tilted head, pipe wrench... all the designs to meet the requirements of your applications will be created and made using high-quality materials. Heat and/or surface treatments can be applied according to your needs.



## SPECIFIC SOCKETS

AMDP can design and manufacture customised sockets on a global scale or modify existing sockets that do not fully meet your requirements.



## RETAINING CLAMP WITH PLASTIC JAWS

As with other standard tools, we can also modify gripping clamps. We can modify the existing product to integrate specific pads for your applications and add PVC-type protection pieces to protect both the gripper and the elements in your work areas: rails, ribs, partitions, etc.

# AVIATION TOOLS

From manufacturing the structure of your aircraft to final assembly...

AMDP invests in the safety of your processes with its range of aviation tools. Our range evolves quickly – we offer you complete and competitive solutions so that you can respond to the difficulties encountered on a daily basis in the best way possible.



## CUTTING TOOLS FOR THE AEROSPACE INDUSTRY

A complete range of cutting tools: HSS, carbide, etc.



## AERONAUTICAL SCREWDRIVERS

AMDP adapts the QX series for all specific fasteners especially for the aviation sector. (HI-LITE, temporary fastenings, HI-LOCK, Monogram etc.).



## RIVETING

- Riveting heap
- Riveting hammer
- Drive sets
- C-yoke, Pneumatic crabs...



C-yoke pneumatic riveter

C-yoke manual riveter



## AERONAUTICAL DRILLS (P33N)

Range of modular or non-modular drills, straight head, angle transmission 30°, 90°, 180°, 360° with collets or chucks.



## METALLISATION BRUSHES

Push or pull. External diameter and driver to be defined according to your requirements.



## SEALANT TOOLS

AMDP has a complete range of tools for applying, smoothing and removing aircraft sealant.



## ACCESSORIES FOR AVIATION TOOLS

# METROLOGY SOLUTIONS

## Tools for successful industrial operations

Take advantage of the wide range of tools that we offer to master your manufacturing processes and increase product quality. With our range, you can ensure that your control measures are traceable and reliable in order to guarantee and qualify your industrial process. As a NORBAR partner, AMDP offers you the best products on the market.

## CONTROLLED TIGHTENING - TORQUE



## TORQUE SCREWDRIVERS AND TORQUE WRENCHES

Torque tools make it possible to set, apply and ensure tightening torques from 0 Nm to 1500 Nm.



## TORQUE METERS

Tooling for carrying out checks on your torque screwdrivers and wrenches (from 0 Nm to 2000 Nm).



## TORQUE MULTIPLIERS

Enables precise tightening to high torque values (up to 100,000 Nm).



## TORQUE WRENCHES

The SNAP-ON range is available.



### CALIBRATION CHAINS AND AUTOMATIC BENCHES

Perform checks on all your torque tools (0 Nm to 300,000 Nm) at the test bench for torque wrenches, which complies with standard ISO6789:2017.



**AMDCW**  
Connectable torque wrench



**VERSATORQ 2**  
DYNAMOMETER TESTER

## DIMENSIONAL CONTROL



### CALLIPERS

AMDP sells a complete range of dimensional and connected metrology tools.



**FLUTED GAUGES**



**COMPARATORS**



**DIMENSIONAL CONTROL GAUGES**



**GAUGE BLOCKS**

# PNEUMATIC TOOLS

## Precision, speed, reliability and simplicity

To meet customers' requirements, AMDP helps you choose the best tool for your needs from its vast range of pneumatic tools. Our specialists are here to help.



## Q2 SERIES

Designed for operator comfort, our range of screwdrivers offer a torque range of 0.3 Nm to 5 Nm with an adjustable ball-type clutch. In addition to the torque-limitation function, the solution benefits from an award-winning ergonomic and quiet design.

## QA SERIES

Our manual screwdrivers offer a wide torque range for small and large fasteners.

A straight version (up to 150 Nm), right-angled version (up to 225 Nm) and spindle version (up to 180 Nm) is available.





INGERSOLL RAND  
DRILLS



INGERSOLL RAND  
MODULAR DRILLS



### CLECO 19 SERIES

The CLECO 19 series offers the optimum solution for the most demanding fastening applications, particularly where precision, reproducibility and durability are held to the strictest standard.



### CLECO HYDRAULIC - PNEUMATIC SCREWDRIVERS

Fast, reliable and high-performance screwing operations.



### DOTCO DRILLS



### JIFFY AIR TOOL DRILLS

# MATERIAL REMOVAL

## The best tools for finishing and refining your parts

All materials can be worked – even treated steels, ceramics and glass-based materials. Our range of material-removal tools can be used to achieve perfect finishes, excellent surface quality as well as good geometric and dimensional accuracy.



ANGLE GRINDERS



STRIP SANDERS



DIE GRINDERS

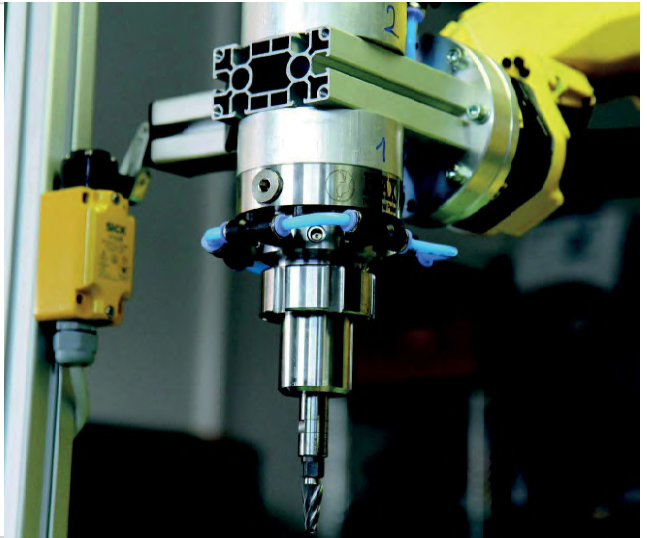




PORTABLE INDUSTRIAL TOOLS



SPINDLES FOR ROBOTS



FLEXIBLE SHAFTS



TURBINE GRINDERS



SCRAPERS



ORBITAL SANDERS

# BATTERY-POWERED TOOLS

## Battery technology by AMDP

The high-performance (7V/10V/20V/40V) lithium-ion battery enables maximum torque and high speed to boost productivity and make your tasks easier. The transmission mechanism, entirely in metal, guarantees a long service life in the most difficult applications. The reinforced composite housing, a robust and patented design, withstands repeated drops. The wireless design makes it portable so that you can use it wherever you need it most.



**QX SCREWDRIVERS  
WITH TORQUE  
SENSOR**

From 0.5 to 4.000 Nm



**IMPACT WRENCHES  
(WITH LIMITER)**

Four torque ranges  
Max. tightening torque  
of 500 Nm



**CELLCLUTCH  
SCREWDRIVERS**

From 1.1 to 41Nm



**ESD LOW-TORQUE  
STRAIGHT  
SCREWDRIVERS**

From 150 to 1 200 rpm



**ESD LOW-TORQUE  
ANGLE GRINDERS**

From 150 to 1 200 rpm



**BATTERY-POWERED  
DRILL-SCREWDRIVER KIT**



**RATCHET WRENCHES**

# SCREWDRIVER ACCESSORIES

## Screwdriver accessories for all sectors

As a partner to a number of major brands, we offer all types of sockets and bits and can even offer customised solutions according to your requirements. Hexagon sockets, surface drive sockets, quick engagement, magnets at the bottom or on the side – all types of bits are available (see box below).

For more information, please request our catalogue.



SOCKETS WITH PROTECTION



AMDP SOCKETS AND BITS WITH PROTECTION



SOCKETS, BITS AND EXTENSIONS

## SPECIAL SOCKETS AND BITS

We can make sockets and bits to meet your specific requirements, either individually or in large quantities.



NON-CONDUCTIVE INSULATED SOCKETS

### TYPES D'EMBOUS DISPONIBLES

- |           |               |                       |
|-----------|---------------|-----------------------|
| B.N.A.E   | Sel-o-fit     | Torx Plus             |
| Frearson  | Slotted       | Torx Tamper Resistant |
| Hi-Torque | Socket Head   | Torx                  |
| Philips   | Square Recess | Tri-Wing              |
| Pozidriv  | Torque-Set    | Triple Square         |



# SERVO SCREWDRIVER

Speed, stability, precision

AMDP integrates the advances made in recent years into the field of IOT and connectivity.



## INSIGHTqc

The INSIGHTqc controller is fully compatible with our QE and QM tools. With the INSIGHTqc controller, these tools can record 50,000 tightening points and tightening curves. Users will have a complete overview of the different aspects of the tightening process (torque, angle, time and date).

Different communication protocols: IP Ethernet, ProfiNet, ProfiBus, DeviceNet, Open protocol, MES, ToolsNet, etc.



## SERVO SCREWDRIVER RANGE WITH VERY HIGH TORQUE

### ACRADYNE SERIES WITH CABLE

The Gen IV ACE controller platform provides flexibility and freedom to control tools for every application.

A unique range of servo electric screwdrivers for very high torque.

Up to 18,000 Nm.



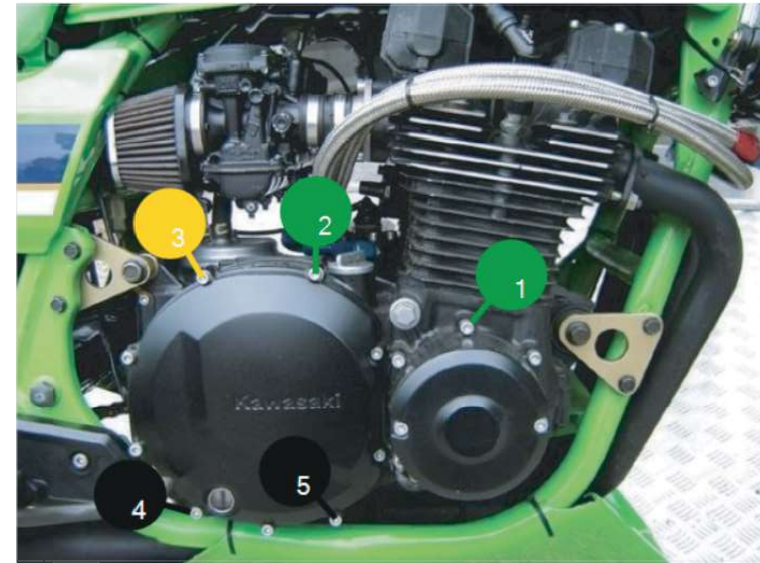
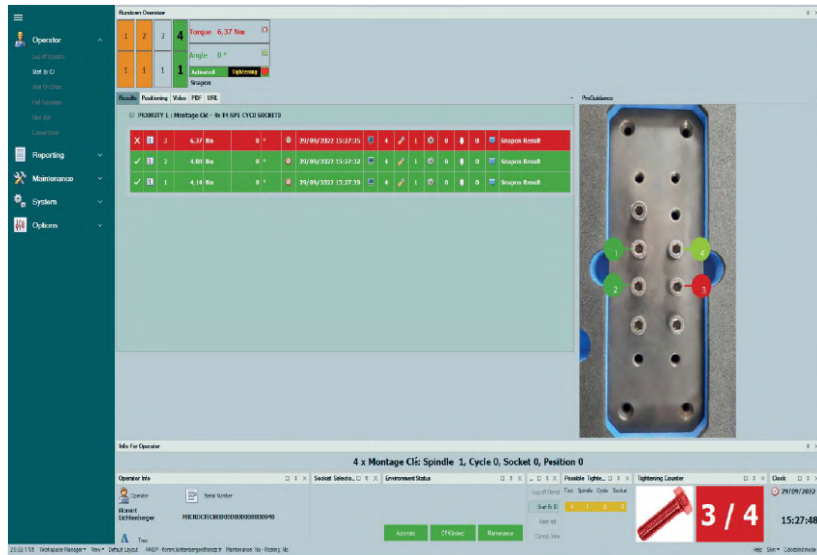
### WIRELESS RANGE

Range of drills; pistol and angle configurations with a torque range of up to 4000 Nm.

They can operate in stand-alone mode or linked to traceability software via a WIFI connection.

# WORKSHOP SOFTWARE

## Process management, traceability & user support

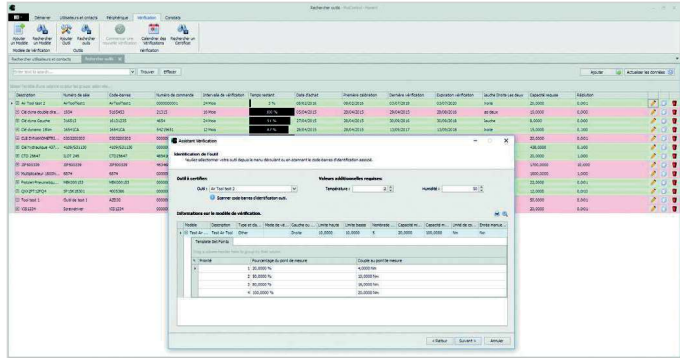


## PROTIGHT SOFTWARE

Assembly management and support software. Your tools are directly connected to your computer system. On-station tutorials manage your product diversity and guide operators (Poka yoke). The system saves your clamping data locally or on a dedicated server. It allows you to print and manage your torque range reports.

## VISUAL AID PROGUIDANCE

- Operator screen support
- Edit an infinite number of models on the line
- Directly associate your PDFs from the design office
- Associate a video illustrating the editing range
- Point to an internal URL if required

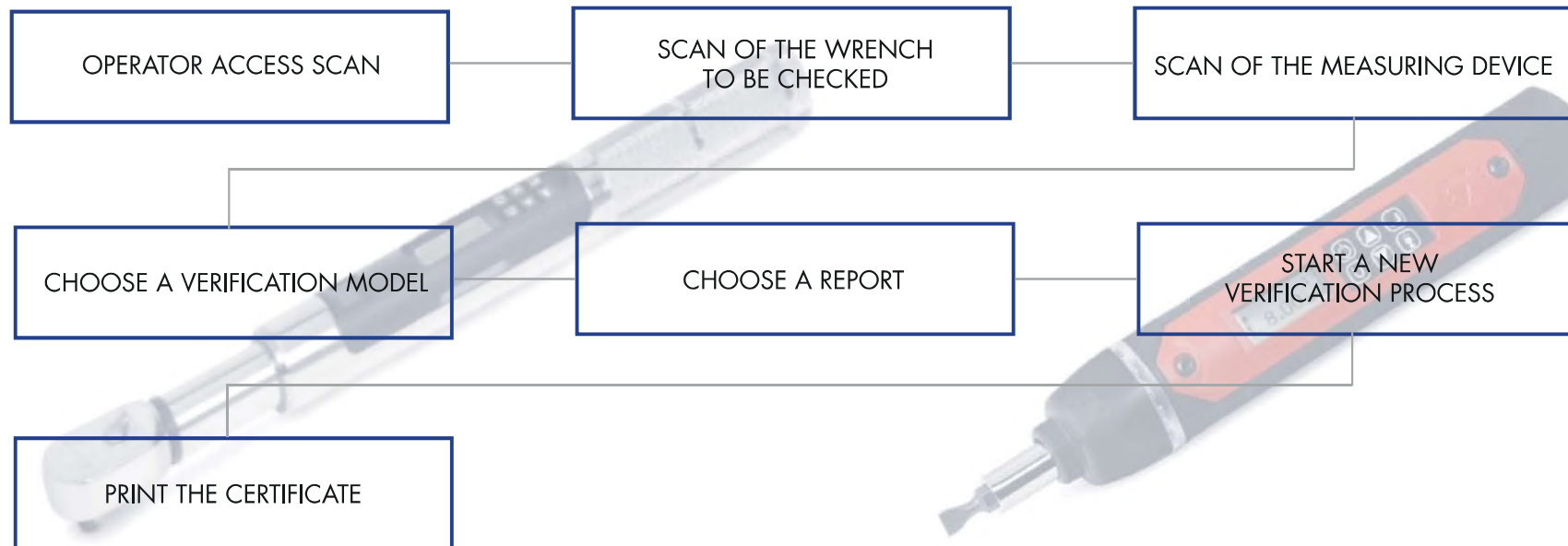


## PROCONTROL SOFTWARE

Procontrol allows you to manage your entire torque tool fleet :

- Create a database for all torque tools in accordance with current standards
- Create standard or customized audit templates
- Manage the tool pool by serial number
- Run the verification model through several steps
- Manage your users by giving them levels of responsibility
- Customise and edit your audit reports
- Compatible with all NORBAR measuring devices

## PROCESS SEQUENCE



# HANDLING AND ERGONOMICS

## Reliability, maintainability and flexibility of handling systems.

Simple or more elaborate solutions are available to improve workstation ergonomics and reduce MSD (musculoskeletal disorders).



### ZERO-GRAVITY ARMS

Zero-gravity arms incorporate a pneumatic balancing system and relieve the operator of the weight of the tool (designed for high torque values).



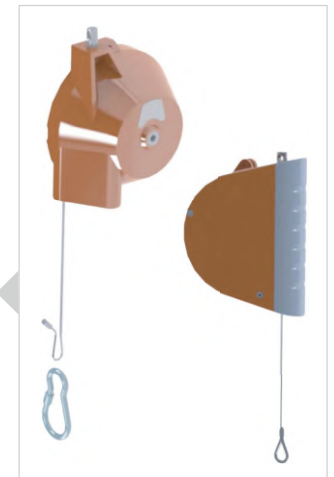
### PNEUMATIC BALANCERS

The balancers and weight lifters allow users to lift and "float" the load effortlessly.



### PANTOGRAPH ARMS

Torque arm for table mounting – absorbs the torque reaction and supports the weight of the equipment.



### CABLE BALANCERS

Cable balancer with a load capacity of 0.4 kg to 165 kg for your tools.



# WORKSHOP FURNITURE



## SECURITY CABINETS

- Fire resistant safety cabinets according to EN 14470-1
- Lithium-ion battery cabinets
- Custom cabinets

## DISTRIBUTION SYSTEM

Consumable management solution using a weighing system.



## WORKSHOP FURNITURE

- Set of modular cabinets for workstations
- Definition adaptable to your needs
- Wide range of drawer configurations
- Colours of your choice (please contact us)



# SMART STORAGE SOLUTIONS (ANTI-FOD)

Productivity, quality, traceability – safeguarding your means of production.

All materials can be worked – even treated steels, ceramics and glass-based materials. Our range of material-removal tools can be used to achieve perfect finishes, excellent surface quality as well as good geometric and dimensional accuracy. AMDP team provide technical support.



## ATC TOOL BOX WITH DIGITAL IMAGING TECHNOLOGY

Developed by SNAP-ON, this WIFI (and/or wired) connected tool cabinet automatically manages the tools by digitally scanning the drawers at opening and closing. Access tooling is managed by access control with user badges. Detection of damaged or incomplete tools by reference image comparison. The entire ATC tooling fleet is managed by a heavy client that allows you to add users, access your history, manage the calibration date of your dynamometric tools...



## RFID CABINETS

Also connected to the thick client, the ATC locker allows the management of larger tools by sticking an RFID tag.





## VTC DISPLAY CASES

Tools are stored in foam inserts in a case with a display window at a 45-degree angle. The case can be unlocked with an RFID tag; the lock mechanism is connected to a WIFI network. The tools are visible for a visual check. The connected lock mechanism makes it possible to track users.



## FOAM KITS

A simple solution for visual inspection of tooling or parts to be assembled. AMDP draws your foam drawings on SolideWork® and machines them in-house. We deliver a custom-made product ready for use.



## COMPLETE TOOL BOXES AND OPERATION KITS

All your tools stored in anti-FOD foam.



## TRAVEL CASES

Your tools stored in foam inserts that you can transport and show to customers (GSE).

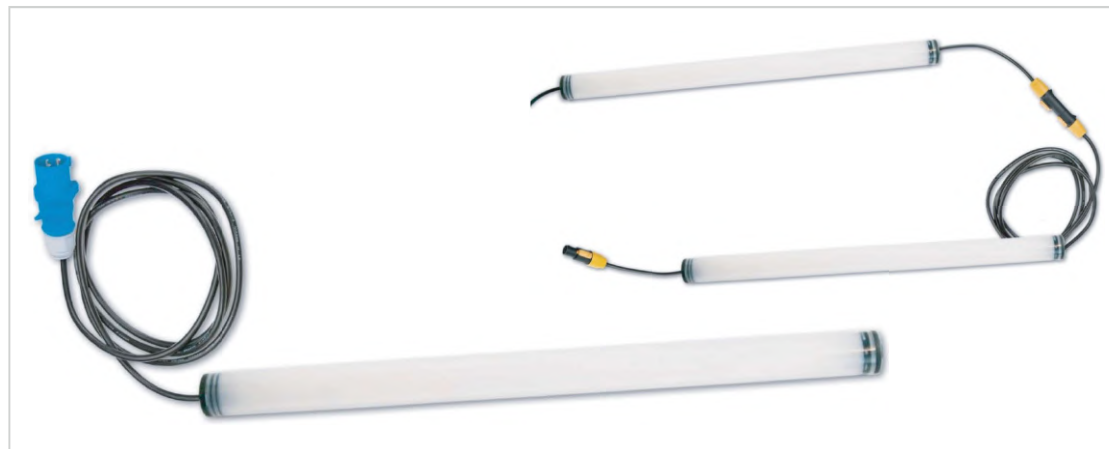
# LIGHTING

## Innovation in LED lighting

AMDP with its partner designs and manufactures, in France, standard and customised LED lighting for professionals : architects, designers, installers and industrialists. By mastering the design and manufacture of LED modules and luminaires, AMDP is positioned as an expert in LED lighting and assists professionals in the implementation of efficient and sustainable lighting solutions.

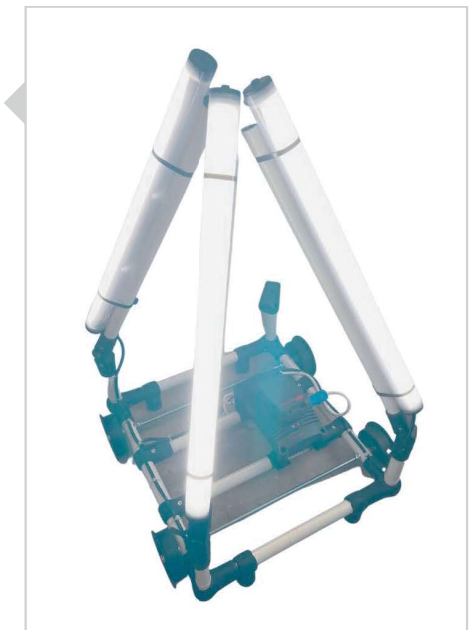


LED LINEAR FOR WORKSTATION WITH GRADUATION



CHAINABLE LED TUBES AND LIGHTS

LED PYRAMID



# OUR OTHER SERVICES

## CALIBRATION AND REPAIR

Our service department can repair tools of all brands, such as Biax, Cleco, Ingersoll Rand, Snap-On, Norbar... We can calibrate your screwdrivers, torque multipliers as well as your screwdrivers and torque spanners.

For more information contact us or download the return form from our website [www.amdp.fr](http://www.amdp.fr)



AMDP is the official repairer of the QX and DC tools



## TECHNICAL SUPPORT AND GUIDANCE

Customised solutions for your tools, kits and foams  
IT support and technical training before and after sales  
Technical drawing via Solid Work®, XAO ELEC® and CATIA V5



## LOGISTIC SERVICE

Flexibility  
Automatisation  
High storage capacity  
Fast reception and dispatch of your parcels



## WEBSHOP

Order online  
Request a quote  
View stock  
Punch Out solution available soon

[www.amdp.shop](http://www.amdp.shop)

# OUR MAIN BRANDS



# ALSO DISCOVER IN OUR GROUP



## SAFE-T-CABLE® CLAMPS AND CABLES

The ultimate fastener retention system, 3x faster, improved reliability and safety



## CONNECTORS AND INTERCONNECT SOLUTIONS

Standards M85049, D28999, Mighty Mouse



## CRAMPING TOOL

Steel bands and tools



## MIL-AERO CRIMPING TOOL

Manual, pneumatic and batteries



## SOLDERING STATION

Solder iron, soldering tips, heating plate, smoke extractor



## RANGE OF ESD PRODUCT

We can audit your entire ESD-protected area according to standard EN 61340 to ensure that the area is fully compliant.

Our websites : [www.oceta.com](http://www.oceta.com) / [www.oceta.shop](http://www.oceta.shop)

# AMDP

MADE FOR INDUSTRY

THEY TRUST US

AIRBUS



DAHER



GOODRICH

GROUPE BENETEAU



Revima



Trescal

OUR WEBSITES

[www.amdp.fr](http://www.amdp.fr) - [www.amdp.shop](http://www.amdp.shop)

HEAD OFFICE

8 Boulevard Georges Marie Guynemer  
78210 Saint-Cyr-l'École, FRANCE

CONTACT

☎ +33 1 30 09 25 25  
✉ [info@amdp.fr](mailto:info@amdp.fr)

MOROCCO

ZI OULED SALLAH - Lot 141  
20180 Bouskoura, MOROCCO

CONTACT

☎ +212 5 22 33 47 26  
✉ [soukaina.chhaib@fima.ma](mailto:soukaina.chhaib@fima.ma)